

A00.10 Relay card

System-level description

The iLOQ R10S.3 Key Switch has been developed for easy control of peripheral systems by the iLOQ K10S key. The same iLOQ Key used for opening lock cylinders is used as an identification object to activate additional applications like elevators, parking barriers and alarm systems.

The iLOQ Key Switch R10S.3.x consists of programmable Relay Card and assorted Key Reader.

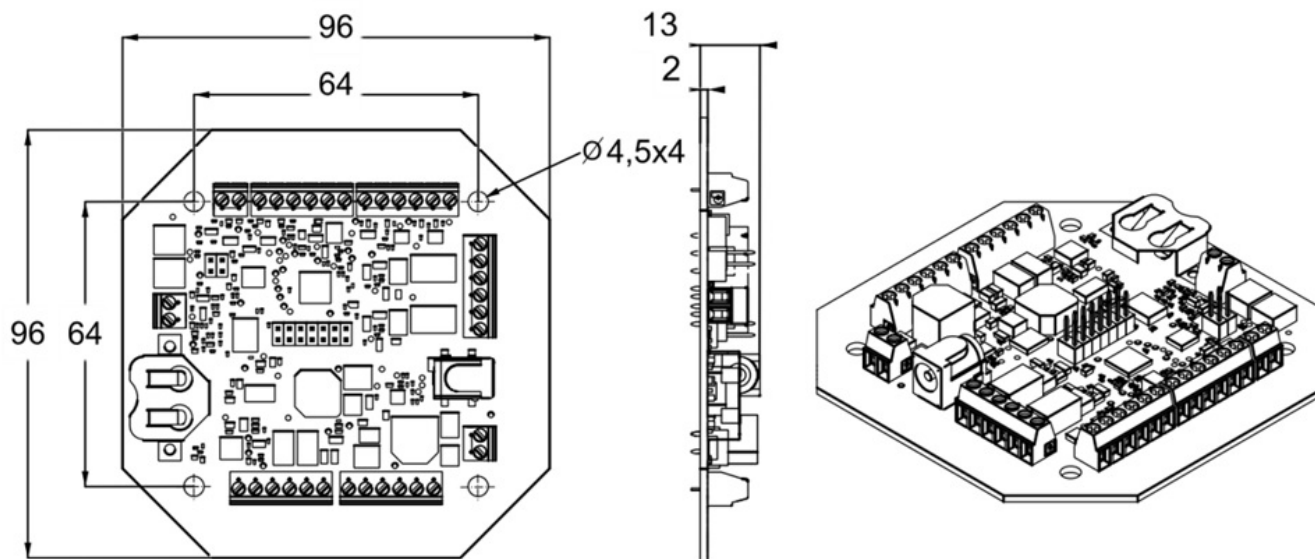
The relay output(s) are activated when the iLOQ K10S key is read. The distance between the Key Reader and the Relay Card can be up to 100m, meaning the controlling sensitive relay parts can be installed in secured place inside the building.

The Key Switch is programmed using a computer and the iLOQ Programmer. The Key Switch records audit trail of lock events.

Feature summary

- Secured using powerful challenge response authentication (SHA-1)
- Programmed using the iLOQ P10S Programmer
- iLOQ 2-wire interface for online connection for remote programming
- Blocklist for individual lost keys
- Access group list for key accesses (access rights)
- Pre-blocklisting of lost key by a key
- Event log
- »Time stamp with optional real time clock
- Communication interface for iLOQ Key Reader
- Place for real time clock (A00.9)
- External input for controlling conditional access right by potential free contact information
- 2 potential free relay outputs (K1 and K2) for controlling external device
- 3 digital outputs for LED-indication for surface mounted Key Readers A10.56.1/2/4
- RS232 bus for relay extension module
- » 8 outputs (A00.11)
- » 16 outputs (A00.12)
- 2 potential free push button inputs for activating K1 and K2 relays
- Cylinder interface for activating relay K2 instead of the Key Reader
- Relay Card can be installed to a safe place
- » A10.83 enclosure available as an accessory

Dimensional drawing



Memory capacity

Number of access rights	210
Number of blocklisted keys	210
Number of access rights with version-data	1+208
Pre-blocklist for replaced keys	256
Size of event log	512

Technical data

Current consumption with 1 relay extension module.....	Max. 500mA/12Vdc, 300mA/24Vdc
Current consumption with 2 relay extension modules	Max. 1A/12Vdc, 600mA/24Vdc
Current consumption with A10.56.x reader.....	Max. 70mA/12Vdc, 40mA/24Vdc
K1 and K2 relay output contact ratings.....	3A/12V, 2A/24V, 1A/48V
Number of inputs	2
Relay outputs' K1 and K2 contacts	C, NC and NO
Supply voltage	12...48 VDC
Maximum temperature	50°C
Minimum temperature	-10°C