

# Information flyer safes

## Standards and cash rating

### Burglary resistant safes

Money, important documents and valuables with a high financial or emotional (and irreplaceable) value need to be stored securely, protected against theft.

A European certified burglary resistant high quality cabinet or safe provides the required protection and thus the desired security.

### European standards

Proper burglary resistant safes and cabinets are tested according to European standards such as EN 14450 and EN 1143-1.

During the testing procedure one or more openings are made by testers who have relevant knowledge, skills and burglary tools as described in the European standard.

### Cash rating as used by insurers based on ratings

RATING	CASH	VALUABLES
EN 14450 S1	€ 2.500	€ 5.000
EN 14450 S2	€ 5.000	€ 9.000
EN 1143-1 Grade 0	€ 7.000	€ 14.000
EN 1143-1 Grade I	€ 10.000	€ 20.000
EN 1143-1 Grade II	€ 25.000	€ 50.000
EN 1143-1 Grade III	€ 45.000	€ 90.000
EN 1143-1 Grade IV	€ 75.000	€ 150.000
EN 1143-1 Grade V	€ 125.000	€ 250.000
EN 1143-1 Grade VI	€ 250.000	€ 500.000
EN 1143-1 Grade VII or higher	please consult your insurer	please consult your insurer

Please check [www.indicatiewaardeberging.nl](http://www.indicatiewaardeberging.nl) for more information.

### How is the cash rating determined?

Insurers attach a cash rating to a safe standard as an indication of coverage. This is based on a standard situation in which the burglary resistant cabinet or safe is located in an uninhabited, unguarded and non-secured building in an urban area. If additional security measures are taken, the insurer may increase the cash rating.

# Information flyer safes

## Standards and cash rating

VGW v1.3

### EN labels (certified safes)

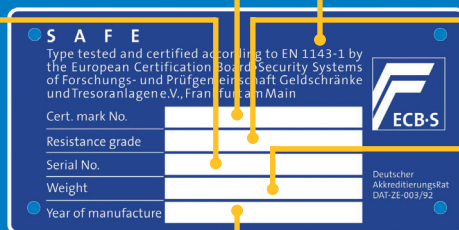
On the inside of the door you will find a label which helps you to assess the quality of the certified safe. This shows that the safe has been produced under controlled conditions and has been independently tested. Please see the ECB-S label below explaining the information shown on the label.

#### Cert. mark. no.

Every safe has a unique identification code provided by the testing institute.

#### Serial no.

Each safe has a unique serial number. This number is provided by the manufacturer.



#### Year of manufacture

The year of production.

### Common labels

Below are some examples of labels which you may encounter on your safe equivalent to the ECB-S label:



Germany



Italy



France



Sweden

\* for more information please contact your insurer or visit our website: [www.indicatiewaardeberging.nl](http://www.indicatiewaardeberging.nl)

### How are safes tested?

When testing burglary resistant safes, one or more openings are made by experts who possess relevant knowledge and skills as described in the European testing standard. The test result is then converted to a score which takes the time factor and the used tool(s) into account. The higher the score, the higher the resistance. A graded rating is given to the safe based on this test result.